

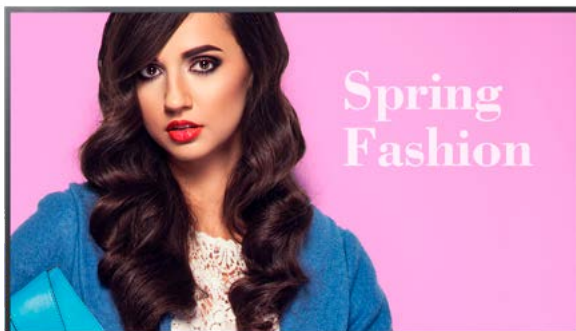
46.0"	UH46N-E	46.0"	UM46N-E
55.0"	UH55F-E	55.0"	UM55H-E



Seamlessly brilliant video walls.

Extremely Thin Bezels for Virtually Seamless Video Walls

Deliver deeper visual impact with extreme narrow bezel video walls from Samsung. Featuring a bezel-to-bezel width of just 1.7mm, these 55" and 46" displays will create a virtually seamless picture across multiple screens, for incredible impact. Factory calibration ensures consistent, natural color, while non-glare glass makes sure bright reflections don't get in the way of your beautiful message.



Key Features



Bezel-to-Bezel Measurement of 1.7mm

Create virtually seamless video walls and deliver deeper visual impact. Extreme narrow bezel video walls feature a bezel-to-bezel width of just 1.7mm, for a near-seamless and captivating picture across multiple screens without interruption.



Achieve Brilliant, Glare-Free Picture Quality

Combined with a bright, non-glare panel, the extreme narrow bezel video wall delivers memorable content even under ambient light.



Reliable 24/7 Continuous Long-Term Operation

With continuous 24/7 operation, you can deliver vivid messages around the clock, without worrying about darkening panels.



Accurate, Factory-Calibrated Color

Factory calibration to precise Samsung specifications ensures uniform brightness and color across multiple displays, for gorgeous, consistent video walls. Users can also manage brightness and color uniformity with Samsung's Color Expert Pro, a powerful, free software program.



Easy, Cost-Saving Mobile Calibration

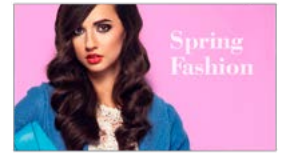
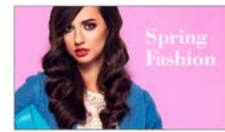
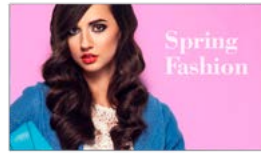
Samsung's Color Expert Pro Mobile solution provides quick and easy video wall calibration through a mobile camera. With an intuitive UI, even non-experts can adjust the white balance on all displays of a video wall simultaneously (up to 5x5), without the need for additional equipment.



Powerful UHD Viewing Experience

Users can configure impossible-to-ignore video walls through DisplayPort 1.2, even at UHD resolution. No PCs, additional graphic cards or splitters are required.

Samsung UH/UM Extreme Narrow Bezel Video Wall Displays



Panel		UH46N-E		UH55F-E		UM46N-E		UM55H-E		
Panel	Diagonal Size	46"		55"		46"		55"		
	Class	45.9" / 116.8cm		54.6" / 138.7cm		45.9" / 116.8cm		54.6" / 138.7cm		
	Type	D-LED DID		D-LED DID		D-LED DID		D-LED DID		
	Resolution	1920 x 1080		1920 x 1080		1920 x 1080		1920 x 1080		
	Pixel Pitch (mm)	0.53025mm (H) x 0.53025mm (V)		0.63mm (H) x 0.63mm (V)		0.53025mm (H) x 0.53025mm (V)		0.63mm (H) x 0.63mm (V)		
	Active Display Area (mm)	1018.08mm x 572.67mm		1209.6mm x 680.4mm		1018.08mm x 572.67mm		1209.6mm x 680.4mm		
	Brightness	Max 700 nits		Max 700 nits		Max 500 nits		Max 500 nits		
	Contrast Ratio	4000:1		4000:1		4000:1		4000:1		
	Viewing Angle (H/V)	178/178		178/178		178/178		178/178		
	Response Time (G-to-G)	8ms		8ms		8ms		8ms		
	Display Colors	8 bit - 16.7M		8 bit - 16.7M		8 bit - 16.7M		8 bit - 16.7M		
	Color Gamut	72%		72%		72%		72%		
	Operation Hour	24/7		24/7		24/7		24/7		
	Panel Orientation	Landscape / Portrait		Landscape / Portrait		Landscape / Portrait		Landscape / Portrait		
Anti-Glare Panel	25%		25%		25%		25%			
Display	Dynamic C / R	MEGA DCR		MEGA DCR		MEGA DCR		MEGA DCR		
	H-Scanning Frequency / V-Scanning Frequency	30kHz ~ 81kHz / 48Hz ~ 75Hz		30kHz ~ 81kHz / 48Hz ~ 75Hz		30kHz ~ 81kHz / 48Hz ~ 75Hz		30kHz ~ 81kHz / 48Hz ~ 75Hz		
	Maximum Pixel Frequency	148.5MHz		148.5MHz		148.5MHz		148.5MHz		
Connectivity	Input	RGB	Analog D-SUB, DVI-D, DisplayPort 1.2		Analog D-SUB, DVI-D, DisplayPort 1.2		Analog D-SUB, DVI-D, DisplayPort 1.2		Analog D-SUB, DVI-D, DisplayPort 1.2	
		Video	HDMI 2.0 (2)		HDMI 2.0 (2)		HDMI 2.0 (2)		HDMI 2.0 (2)	
		HDCP	HDCP 2.2		HDCP 2.2		HDCP 2.2		HDCP 2.2	
		Audio	Stereo Mini Jack		Stereo Mini Jack		Stereo Mini Jack		Stereo Mini Jack	
	Output	USB	Only F/W Upgrade		Only F/W Upgrade		Only F/W Upgrade		Only F/W Upgrade	
		RGB	DP1.2 (Loop-out)		DP1.2 (Loop-out)		DP1.2 (Loop-out)		DP1.2 (Loop-out)	
		Audio	Stereo Mini Jack		Stereo Mini Jack		Stereo Mini Jack		Stereo Mini Jack	
	External Control	RS232C (In / Out), RJ45		RS232C (In / Out), RJ45		RS232C (In / Out), RJ45		RS232C (In / Out), RJ45		
	External Sensor	Detachable Type (IR, Ambient)		Detachable Type (IR, Ambient)		Detachable Type (IR, Ambient)		Detachable Type (IR, Ambient)		
	Wi-Fi / Bluetooth	N/A		N/A		N/A		N/A		
Tuner	N/A		N/A		N/A		N/A			
Power	Type	Internal		Internal		Internal		Internal		
	Power Supply	AC 100 - 240 V~ (+/- 10 %), 50/60 Hz		AC 100 - 240 V~ (+/- 10 %), 50/60 Hz		AC 100 - 240 V~ (+/- 10 %), 50/60 Hz		AC 100 - 240 V~ (+/- 10 %), 50/60 Hz		
	Power Consumption	Max / Typical (W / H)	187 / 102		297 / 180		143 / 79		297 / 180	
		BTU (Max)	638		1013		488		1013	
	Sleep Mode	< 0.5W		< 0.5W		< 0.5W		< 0.5W		
	Off Mode	< 0.5W		< 0.5W		< 0.5W		< 0.5W		
Dimensions	Set Dimension (W x H x D)	40.15" x 22.6" x 3.8"		47.6" x 26.8" x 3.7"		40.15" x 22.6" x 3.8"		47.7" x 26.9" x 3.8"		
	Package Dimension (W x H x D)	45.4" x 28.3" x 11.6"		53.3" x 31.8" x 12.5"		45.4" x 28.3" x 11.6"		53.3" x 31.9" x 12.6"		
	VESA Mount	600mm x 400mm		600mm x 400mm		600mm x 400mm		600mm x 400mm		
	Bezel Width (mm)	1.15mm (U/L), 0.55mm (R/B)		1.15mm (U/L), 0.55mm (R/B)		1.15mm (U/L), 0.55mm (R/B)		1.15mm (U/L), 0.55mm (R/B)		
Weight	Set Dimension (W x H x D)	34.6 lbs		46.29 lbs		34.6 lbs		46.3 lbs		
	Package Dimension (W x H x D)	47.6 lbs		60.4 lbs		47.6 lbs		62.2 lbs		
Operation	Operating Temperature	0°C - 40°C		0°C - 40°C		0°C - 40°C		0°C - 40°C		
	Humidity	10-80%		10-80%		10-80%		10-80%		
Features	Key	Extreme Narrow Bezel		Extreme Narrow Bezel		Extreme Narrow Bezel		Extreme Narrow Bezel		
	Special	ACM Support (Advanced Color Management), Auto Source Switching & Recovery, Haze 25%, Temperature Sensor, RS232C / RJ45 MDC, Plug and Play (DDC2B), Videowall (15x15 (OSDI)), Videowall Daisy Chain (10x10), Pivot Display, Image Rotation, Button Lock, DP 1.2 Digital Daisy Chain (Supporting UHD Resolution, HDCP Support), Smart F/W Update, Clock Battery (80 Hrs Clock Keeping)								
Certification	Safety	UL 60950-1								
	EMC	FCC Part 15, Subpart B Class A								
Accessories	Included	Quick Setup Guide, Warranty Card, DP Cable, Stereo to DB9 Cable, Power Cord, Remote Controller, Batteries								
	Optional	Mount	WMN-46VD		WMN-55VD		WMN-46VD		WMN-55VD	
	Media Player Option Type	SBB (Slide In), Signage Player Box		SBB (Slide In), Signage Player Box		SBB (Slide In), Signage Player Box		SBB (Slide In), Signage Player Box		
Warranty	Standard Warranty	3 Years Onsite (Parts / Labor / Backlight)		3 Years Onsite (Parts / Labor / Backlight)		3 Years Onsite (Parts / Labor / Backlight)		3 Years Onsite (Parts / Labor / Backlight)		

Connectivity

- Control In
- USB
- RJ45
- DVI / RGB / MagicInfo In
- HDMI 1
- HDMI 2
- DisplayPort In
- RS232C In
- RS232C Out
- IR Out
- Audio In
- Audio Out
- DisplayPort Out (Loop Out)



Learn More samsung.com/business insights.samsung.com samsung.com/b2bdigitalsignage

Product Support 1-866-SAM4BIZ

Follow Us youtube.com/samsungbizusa [@SamsungBizUSA](https://twitter.com/SamsungBizUSA)

DigitalDisplayStore
Samsung Authorized Online Reseller

SAMSUNG